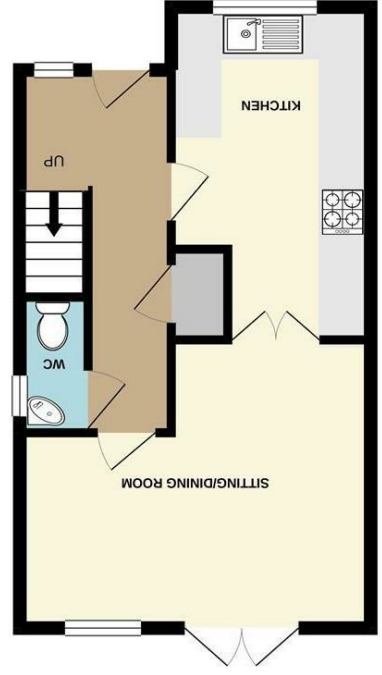
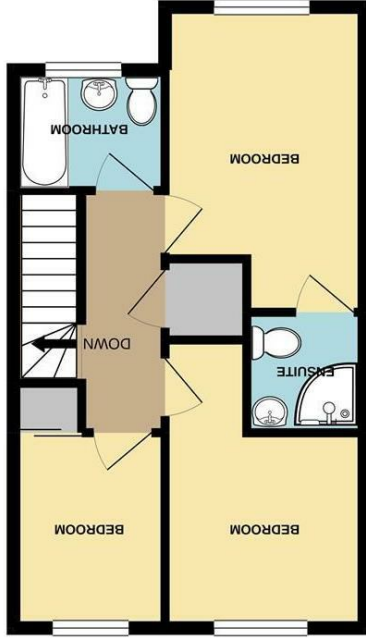


While every attempt has been made to ensure the accuracy of the floorplan contained here, measurements of rooms, windows, doors and any other items are approximate and responsibility is taken for any error or omission of this statement. This plan is illustrative purposes only and should be used as such. By the prospective purchaser, the services, systems and appliances shown have not been tested and no guarantee as to their operability or efficiency can be given.  
 Made with Mapbox © 2023



England & Wales	
EU Directive 2002/91/EC	
Not energy efficient - higher running costs	
(1-20)	G
(21-30)	F
(31-40)	E
(41-50)	D
(51-60)	C
(61-70)	B
(71-80)	A
(81-91)	
(92 plus)	
Very energy efficient - lower running costs	
Current	Potential

**Energy Efficiency Rating**



**Norfolk Property**  
online.

Gordon Avenue | Norwich | NR7  
**Price guide** £325,000

Norfolk Property Online presents this exceptional three bedroom semi detached home in the popular suburb of Thorpe St Andrew. (Help to buy is available)

Accommodation briefly comprises; reception hall, cloakroom, lounge dining room through to a stunning kitchen. The first floor provides three bedrooms, the principle bedroom with an en suite and a family bathroom off the landing also.

Outside there is a good sized rear garden and off road parking for two vehicles to the front.

Quality materials, fixtures and fittings are being used throughout making for an impressive home with long term durability.

Specific details:

**INTERNAL**

- Air-source heating
- Digital and Sky+ TV points
- Oak faced internal doors
- Under floor heating on ground floor radiators on first floor
- Double glazed windows and doors throughout
- Smart touch screen heating controls

